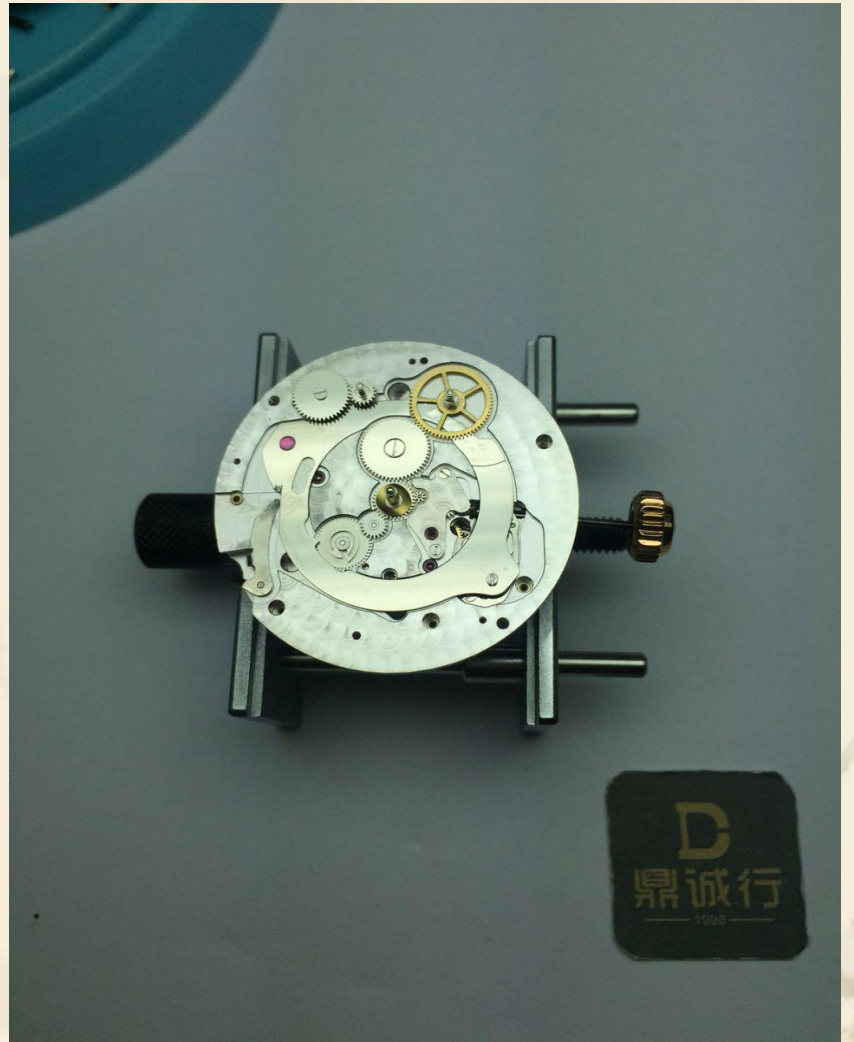


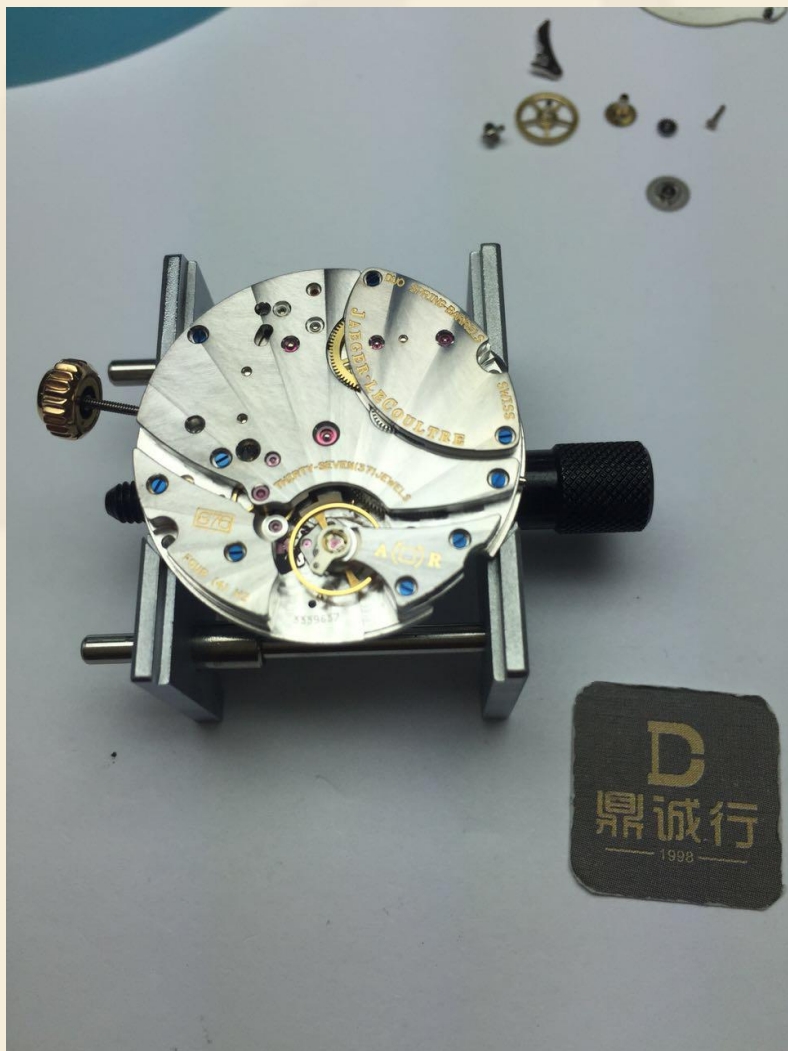
万年历腕表维修案例

-工作原理及常见故障

鼎诚行-蔡锦明





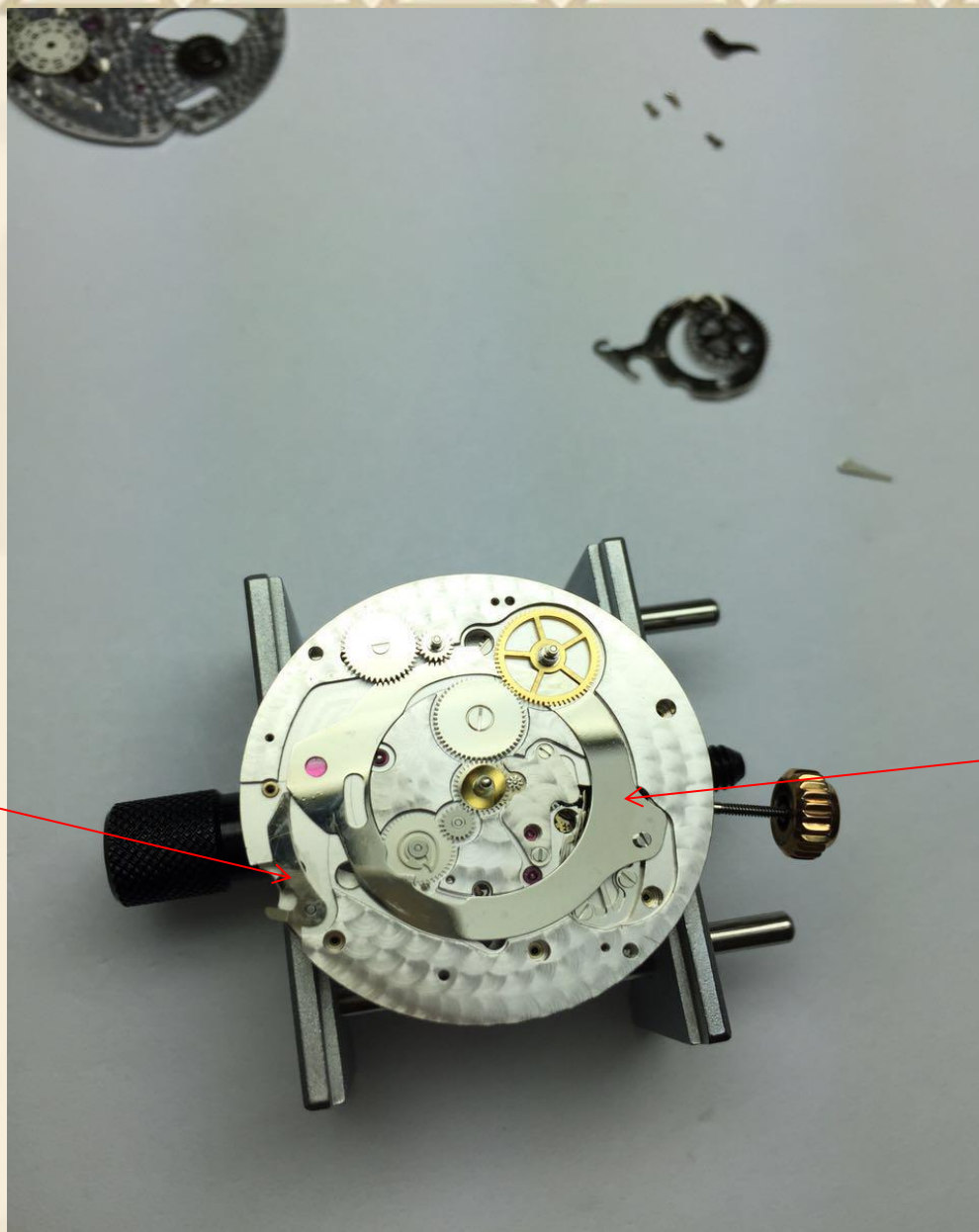




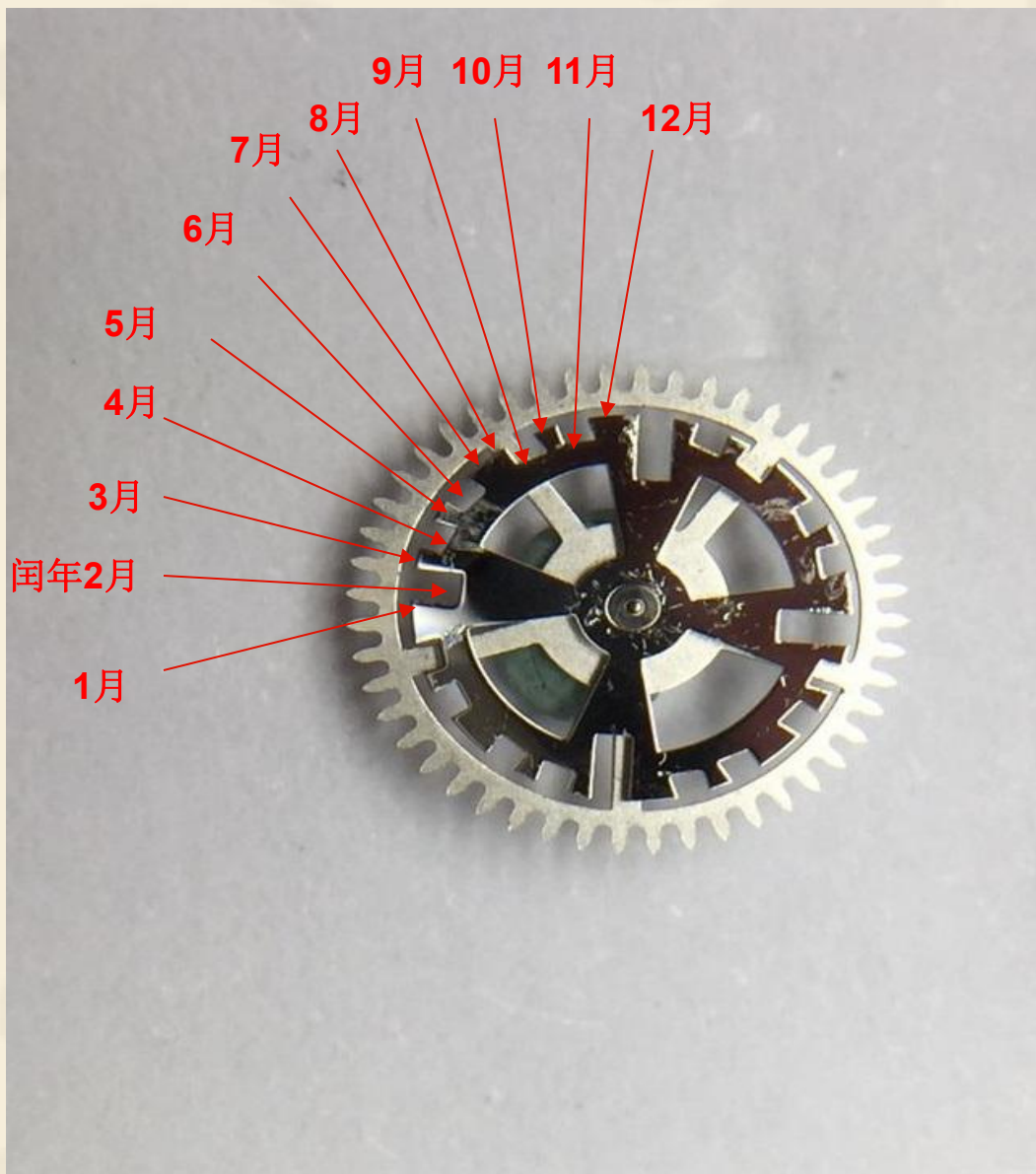




日历快拨杆



跳历传递杆片



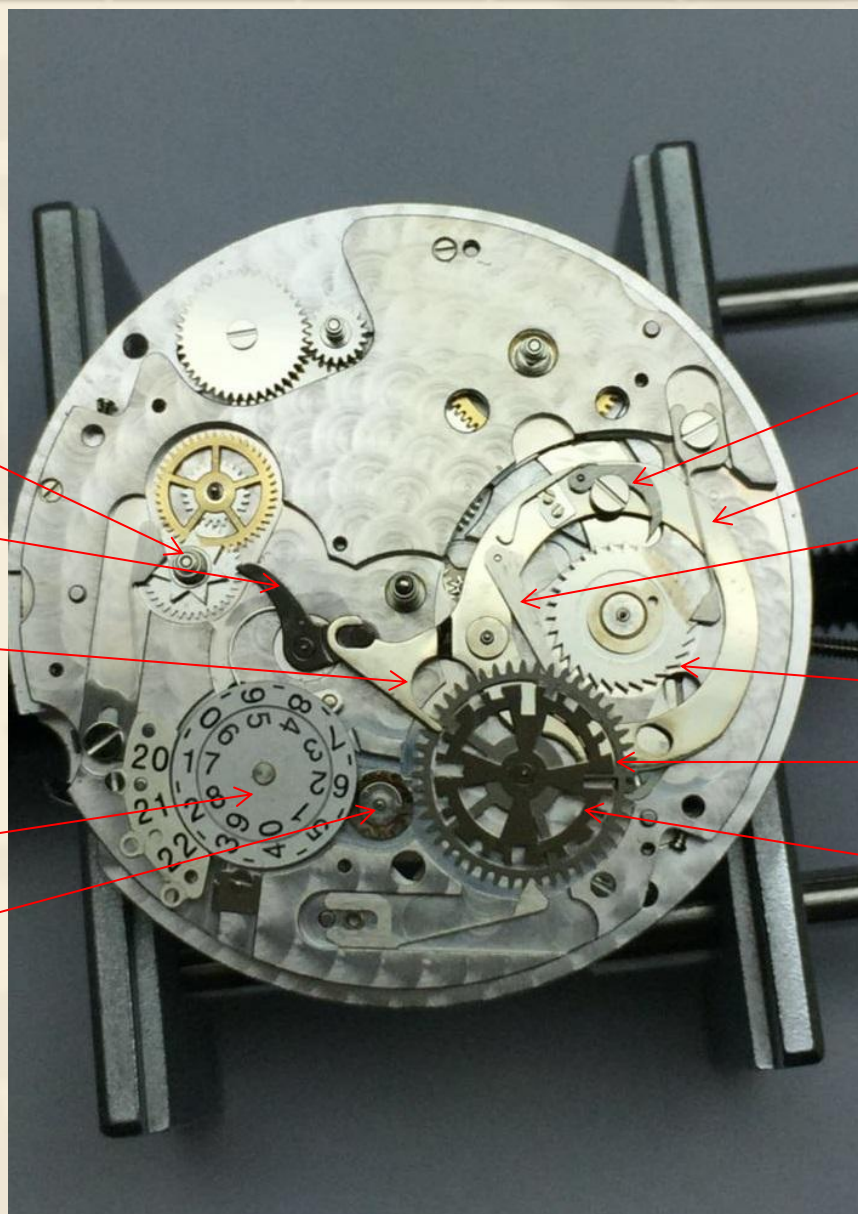
周历轮

周历轮拨杆

大小月识别端

年份显示盘

12齿月份轮



日历轮拨杆

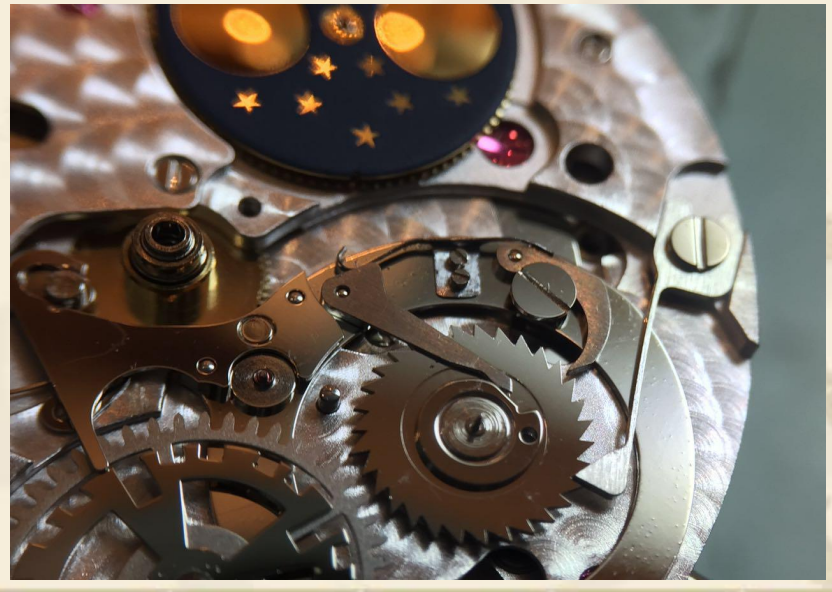
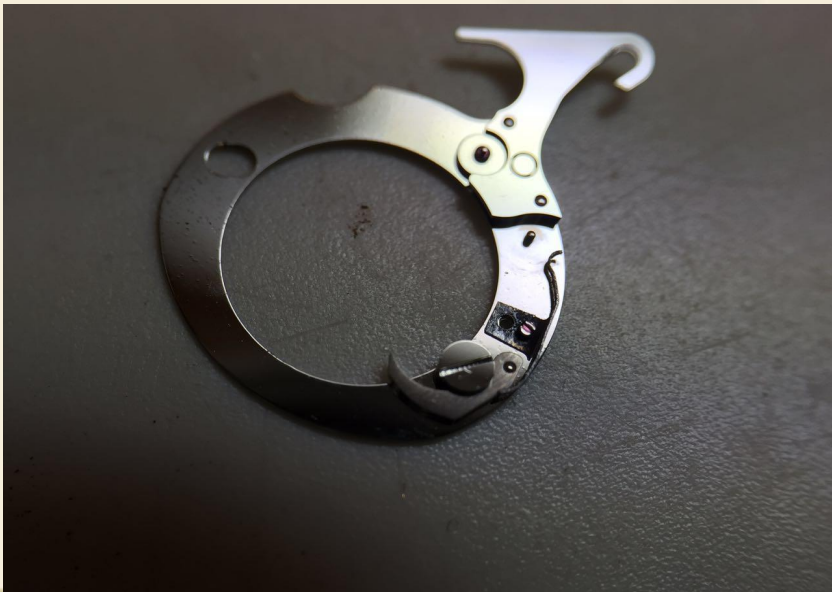
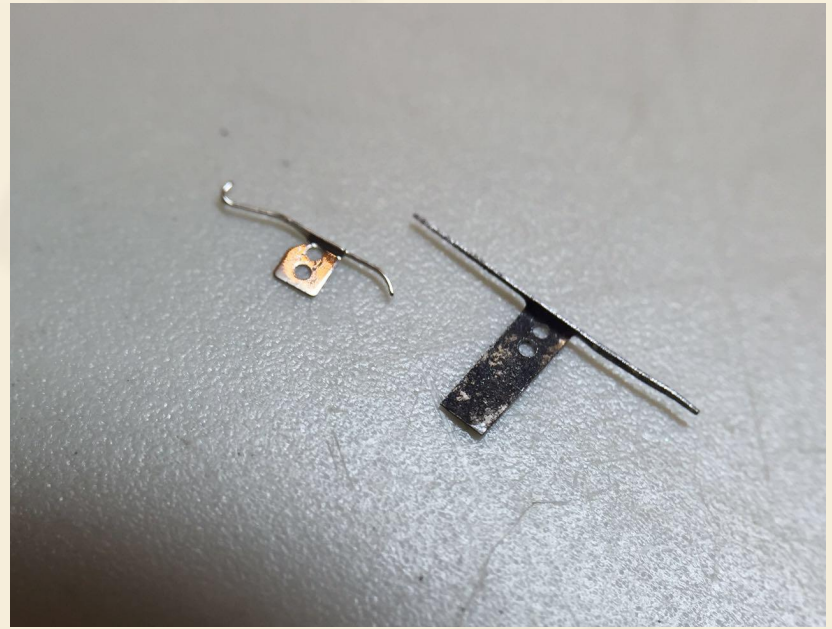
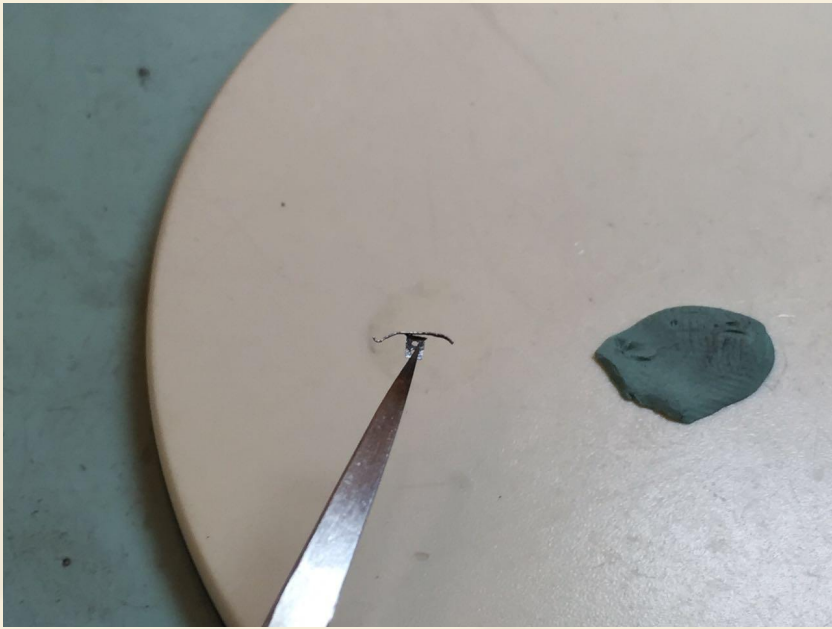
万年历命令杠杆

日历轮推杆

31齿日历轮

48齿月份轮

大小月识别命令轮





Thank you!